



Santa Clara County Office of Education

Charles Weis, Ph.D.
County Superintendent of Schools

October 5, 2010

TO: Charles Weis, Ph.D., County Superintendent of Schools

FROM: Linda Aceves, Chief Academic Officer, Educational Services Branch
Bill Conrad, Ed.D., Director, Assessment and Accountability
Diana Wilmot, Ph.D., Coordinator, Assessment and Accountability
Dan Mason, Research Analyst, Assessment and Accountability
Trish Hernandez, Research Analyst, Assessment and Accountability

SUBJECT: October 5, 2010 Title III Release

The California Department of Education (CDE) released the 2009-2010 California English Language Development Test (CELDT) results to districts. CELDT scores are used to calculate the accountability requirements in Title III of the Elementary and Secondary Education Act (ESEA). Title III provides supplemental funding to local educational agencies (LEAs) to implement programs designed to help English Learners (ELs) and immigrant students attain English proficiency and meet the state's academic and content standards. Title III requires that each state:

- Establish English language proficiency standards
- Conduct an annual assessment of English language proficiency
- Define two annual measurable achievement objectives (AMAOs) for increasing the percentage of EL students making progress in learning English and attaining English proficiency
- Include a third AMAO related to meeting Adequate Yearly Progress (AYP) for the EL subgroup at the LEA or consortium level
- Hold Title III-funded LEAs accountable for meeting the three AMAOs

An AMAO is a performance objective, or target, that Title III school districts must meet each year for its ELs. All LEAs receiving a Title III-Limited English Proficient (LEP) grant are required to meet the two English language proficiency AMAOs and a third academic achievement AMAO based on AYP information.

Dr. Bill Conrad and Linda Aceves from our office have analyzed the data and their findings describe the degree to which our Title III school districts successfully achieved their AMAO targets.

Key Main Findings include:

- Nearly all LEA's in Santa Clara County (97%) meet AMAO 1, compared to 78% of the state's LEAs. ([Table 1](#))
- LEA's with English Learners in Santa Clara County outperform LEA's with English Learners across the state in meeting the targets set for AMAO 2, especially among English Learners who have been in the U.S. for less than five years. ([Table 2](#))
- Santa Clara County LEA's considerably outperform the state in meeting AMAO 3 Targets, which include ELA and Math Proficiency Targets on the California Standards Test (CST). ([Table 3](#))
- Santa Clara County LEA's considerably outperform the state in meeting all of the AMAO Targets. ([Table 4](#))

AMAO 1

AMAO 1 is annual increases in the number or percentage of students who make progress in learning English as measured by the CELDT.

(A more detailed definition of AMAO 1 can be found in [Appendix D.](#))

Key Findings:

- Nearly all LEA's in Santa Clara County (97%) meet AMAO 1, compared to 78% of the state's LEAs. (Table 1)

Table 1: Meeting AMAO 1	Santa Clara County	State
Number of LEAs meeting AMAO 1	30	506
Total LEAs	31	647
Percent Met AMAO 1	97%	78%

[Appendix A](#) includes a list of school districts, including the percent of ELs who met AMAO 1.

AMAO 2

AMAO 2 is the percentage of ELs attaining English-language proficiency on the CELDT. (A more detailed definition of AMAO 2 can be found in [Appendix D](#).)

Key Findings:

- LEA’s with English Learners in Santa Clara County outperform LEA’s with English Learners across the state in meeting the targets set for AMAO 2, especially among English Learners who have been in the U.S. for less than five years. (Table 2)
- The top 5 performing districts for AMAO 2 include:
 - Cohort less than 5 years: Downtown College Prep, Union Elementary, Berryessa Elementary, Cupertino Union Elementary, Fremont Union High
 - Cohort more than 5 years: Mt. Pleasant Elementary, Berryessa Elementary, Luther Burbank, Milpitas Unified, Downtown College Prep

Table 2: Meeting AMAO 2 Comparison	SCC			California		
	Cohort less than 5 years	Cohort more than 5 Years	Both Cohorts	Cohort less than 5 years	Cohort more than 5 Years	Both Cohorts
Number of LEA meeting AMAO 2	27	22	22	460	462	408
Total LEA	31	29	32	627	623	649
Percent Meeting AMAO 2	87%	76%	69%	73%	74%	63%

[Return to Key Main Findings](#)

[Appendix B](#) includes a list of school districts and the percent of ELs who have attained English Proficiency and met AMAO 2 in both cohorts.

AMAO 3

AMAO 3 means that EL subgroup meeting the same academic achievement targets that are required of all schools, districts and subgroups under NCLB Title I. There are four components to AMAO 3:

- Participation rate in the CST English language arts (ELA) assessment
- Participation rate in the CST mathematics assessment
- Percent of subgroup that is proficient or above in CST ELA assessment
- Percent of subgroup that is proficient or above in CST mathematics assessment

(A more detailed definition of AMAO 3 can be found in [Appendix D.](#))

Key Findings:

- Santa Clara County LEA’s considerably outperform the state in meeting AMAO 3 Targets, which include ELA and Math Proficiency Targets on the California Standards Test (CST). (Table 3)
- Santa Clara County LEA’s considerably outperform the state in meeting all of the AMAO Targets. (Table 4)

Table 3: Comparison Meeting AMAO 3	SCC	California
Participation Rate ELA	97%	99%
Participation Rate Math	97%	99%
% Meeting ELA Proficiency Targets	46%	21%
% Meeting Math Proficiency Targets	61%	39%
% Meetings AMAO 3 Overall	47%	20%

[Return to Key Main Findings](#)

Table 4: Summary Comparison	SCC	California
% Meeting AMAO 1	97%	78%
% Meeting AMAO 2 (Both Cohorts)	69%	63%
% Meeting AMAO 3	47%	20%
% Meeting all AMAOs	28%	13%

[Return to Key Main Findings](#)

[Appendix C](#) includes a list of LEAs meeting AMAO 3 targets and overall.

Appendix A: List of LEAs meeting AMAO 1*

Name of Elementary District	Number of ELs with required prior year CELDT scores	Number in cohort	% Met AMAO 1	Met AMAO 1 in 2009-2010
Alum Rock Union Elementary	6145	3610	59%	Yes
Berryessa Union Elementary	2664	1881	71%	Yes
Cambrian	314	192	61%	Yes
Campbell Union	2121	1207	57%	Yes
Cupertino Union	1474	1158	79%	Yes
Evergreen Elementary	2938	1826	62%	Yes
Franklin-McKinley Elementary	5251	3250	62%	Yes
Los Altos Elementary	190	137	72%	Yes
Luther Burbank	308	214	70%	Yes
Moreland Elementary	847	488	58%	Yes
Mountain View Whisman	1623	1061	65%	Yes
Mt. Pleasant Elementary	1125	760	68%	Yes
Oak Grove Elementary	3118	1836	59%	Yes
Orchard Elementary	269	193	72%	Yes
Sunnyvale	2050	1215	59%	Yes
Union Elementary	480	355	74%	Yes

Name of High School District	Number of ELs with required prior year CELDT scores	Number in cohort	% Met AMAO 1	Met AMAO 1 in 2009-2010
Campbell Union High	632	403	64%	Yes
East Side Union High	3712	2168	58%	Yes
Fremont Union High	825	514	62%	Yes
Mountain View-Los Altos Union High	240	137	57%	Yes

Name of Unified District	Number of ELs with required prior year CELDT scores	Number in cohort	% Met AMAO 1	Met AMAO 1 in 2009-2010
Gilroy Unified	2651	1610	61%	Yes
Milpitas Unified	2344	1595	68%	Yes
Morgan Hill Unified	1720	1025	60%	Yes
Palo Alto Unified	688	490	71%	Yes
San Jose Unified	7272	4069	56%	Yes
Santa Clara Unified	3610	2442	68%	Yes

Name of Alternative Education District	Number of ELs with required prior year CELDT scores	Number in cohort	% Met AMAO 1	Met AMAO 1 in 2009-2010
Santa Clara County Office of Education	281	151	54%	Yes

Name of Charter School	Number of ELs with required prior year CELDT scores	Number in cohort	% Met AMAO 1	Met AMAO 1 in 2009-2010
Downtown College Preparatory	125	88	70%	Yes
Escuela Popular Accelerated Family Learning	198	146	74%	Yes
Escuela Popular/Center for Training and Careers, F	23	11	48%	Yes
Latino College Preparatory Academy	93	63	68%	Yes
Rocketship Mateo Sheedy Elementary	-	-	-	N/A

* Only includes SCCOE school districts with sufficient number of EL students to meet the accountability requirements for Title III Accountability

--There are not a sufficient number of EL students to determine AMAO 1 accountability.

Appendix B: List of LEAs meeting AMAO 2*

Name of Elementary School District	Number of ELs in cohort less than 5 years	% Met AMAO 2	Number of ELs in cohort more than 5 years	% Met AMAO 2	Overall Met AMAO 2 in 2009-2010
Alum Rock Union Elementary	5454	24%	1980	47%	Yes
Berryessa Union Elementary	2458	38%	726	65%	Yes
Cambrian	356	29%	49	35%	No
Campbell Union	2132	25%	485	33%	No
Cupertino Union	2218	37%	105	38%	No
Evergreen Elementary	2844	28%	777	50%	Yes
Franklin-McKinley Elementary	4830	25%	1621	49%	Yes
Los Altos Elementary	290	35%	31	32%	No
Luther Burbank	260	33%	105	65%	Yes
Moreland Elementary	955	22%	169	44%	Yes
Mountain View Whisman	1527	29%	475	60%	Yes
Mt. Pleasant Elementary	1034	31%	386	67%	Yes
Oak Grove Elementary	2983	27%	882	48%	Yes
Orchard Elementary	288	26%	60	57%	Yes
Sunnyvale	2122	23%	511	40%	No
Union Elementary	587	45%	18	50%	Yes

Name of High School District	Number of ELs in cohort less than 5 years	% Met AMAO 2	Number of ELs in cohort more than 5 years	% Met AMAO 2	Overall Met AMAO 2 in 2009-2010
Campbell Union High	296	27%	388	51%	Yes
East Side Union High	1108	20%	2950	47%	Yes
Fremont Union High	467	37%	490	45%	Yes
Mountain View-Los Altos Union High	116	24%	161	37%	No

Name of Unified School District	Number of ELs in cohort less than 5 years	% Met AMAO 2	Number of ELs in cohort more than 5 years	% Met AMAO 2	Overall Met AMAO 2 in 2009-2010
Gilroy Unified	2212	21%	1098	45%	Yes
Milpitas Unified	2192	31%	737	61%	Yes
Morgan Hill Unified	1323	24%	913	54%	Yes
Palo Alto Unified	1025	32%	80	55%	Yes
San Jose Unified	6436	22%	2178	42%	Yes
Santa Clara Unified	3377	33%	1213	49%	Yes

Name of Alternative Education District	Number of ELs in cohort less than 5 years	% Met AMAO 2	Number of ELs in cohort more than 5 years	% Met AMAO 2	Overall Met AMAO 2 in 2009-2010
Santa Clara County Office of Education	38	8%	299	40%	No

Name of Charter School	Number of ELs in cohort less than 5 years	% Met AMAO 2	Number of ELs in cohort more than 5 years	% Met AMAO 2	Overall Met AMAO 2 in 2009-2010
Downtown College Preparatory	17	53%	118	60%	Yes
Escuela Popular Accelerated Family Learning	202	11%	77	55%	No
Escuela Popular/Center for Training and Careers, F	68	4%	9	11%	No
Latino College Preparatory Academy	43	7%	72	47%	No
Rocketship Mateo Sheedy Elementary	356	34%	0	N/A	Yes

* Only includes SCCOE school districts with sufficient number of EL students to meet the accountability requirements for Title III Accountability

Appendix C: AMAO 3 Targets and Overall*

Name of Elementary District	Met ELA Participation	Met ELA Proficient or Advanced	Met Math Participation	Met Math Proficient or Advanced	Met all AMAO 3 Targets
Alum Rock Union Elementary	Yes	No	Yes	Yes	No
Berryessa Union Elementary	Yes	Yes	Yes	Yes	Yes
Cambrian	Yes	Yes	Yes	No	No
Campbell Union	Yes	Yes	Yes	Yes	Yes
Cupertino Union	Yes	Yes	Yes	Yes	Yes
Evergreen Elementary	Yes	Yes	Yes	Yes	Yes
Franklin-McKinley Elementary	Yes	Yes	Yes	Yes	Yes
Los Altos Elementary	Yes	Yes	Yes	Yes	Yes
Luther Burbank	Yes	No	Yes	No	No
Moreland Elementary	Yes	Yes	Yes	Yes	Yes
Mountain View Whisman	Yes	No	Yes	Yes	No
Mt. Pleasant Elementary	Yes	No	Yes	No	No
Oak Grove Elementary	Yes	No	Yes	No	No
Orchard Elementary	Yes	Yes	Yes	Yes	Yes
Sunnyvale	Yes	No	Yes	Yes	No
Union Elementary	Yes	Yes	Yes	Yes	Yes

Name of High School District	Met ELA Participation	Met ELA Proficient or Advanced	Met Math Participation	Met Math Proficient or Advanced	Met all AMAO 3 Targets
Campbell Union High	Yes	No	Yes	No	No
East Side Union High	Yes	No	Yes	No	No
Fremont Union High	Yes	No	Yes	Yes	No
Mountain View-Los Altos Union High	Yes	No	Yes	No	No

Name of Unified District	Met ELA Participation	Met ELA Proficient or Advanced	Met Math Participation	Met Math Proficient or Advanced	Met all AMAO 3 Targets
Gilroy Unified	Yes	No	Yes	No	No
Milpitas Unified	Yes	Yes	Yes	Yes	Yes
Morgan Hill Unified	Yes	No	Yes	No	No
Palo Alto Unified	Yes	Yes	Yes	Yes	Yes
San Jose Unified	Yes	No	Yes	No	No
Santa Clara Unified	Yes	No	Yes	Yes	No

Name of Alternative Education District	Met ELA Participation	Met ELA Proficient or Advanced	Met Math Participation	Met Math Proficient or Advanced	Met all AMAO 3 Targets
Santa Clara County Office of Education	No	--	No	--	No

Name of Charter School	Met ELA Participation	Met ELA Proficient or Advanced	Met Math Participation	Met Math Proficient or Advanced	Met all AMAO 3 Targets
Downtown College Preparatory	--	--	--	--	N/A
Escuela Popular Accelerated Family Learning	Yes	No	Yes	No	No
Escuela Popular/Center for Training and Careers, F	--	--	--	--	N/A
Latino College Preparatory Academy	Yes	--	Yes	--	Yes
Rocketship Mateo Sheedy Elementary	Yes	Yes	Yes	Yes	Yes

* Only includes SCCOE school districts with sufficient number of EL students to meet the accountability requirements for Title III Accountability

--There are not a sufficient number of EL students to determine AMAO 3 accountability.

Appendix D: Glossary

A description of the three AMAOs can be found in the table below:

AMAO	Assessment
AMAO 1: Percent of ELs Making Annual Progress in Learning English	CELDT
AMAO 2: Percent of ELs Attaining the English Proficient Level	CELDT
AMAO 3: Meeting AYP Requirements for the EL Subgroup at the LEA Level	CST, CAPA, CMA, CAHSEE

AMAO 1

English Proficient Level as measured by CELDT: A student is defined as meeting the English proficient level on the CELDT if both of the following criteria are met:

1. Overall performance level of Early Advanced or Advanced and
2. Domain performance level scores at the Intermediate level or above
 - o For K–1, the listening and speaking domains need to be at the Intermediate level or above
 - o For grades two through twelve, all four domains need to be at the Intermediate level or above

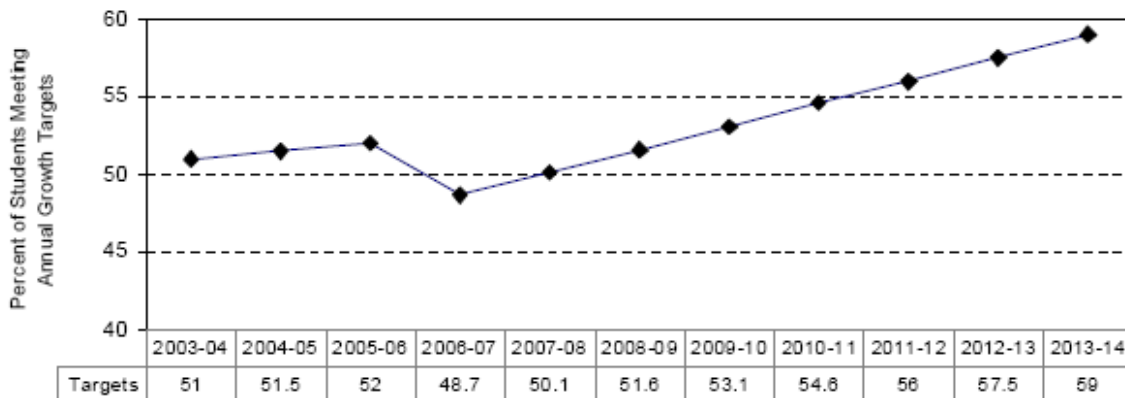
The AMAO 1 reflects the percentage of ELs making annual progress on the CELDT. There are three ways for ELs to meet the annual growth target on the CELDT depending upon what level they were at on the previous CELDT. ELs at the Beginning, Early Intermediate, and Intermediate levels are expected to gain one performance level per year. ELs at the Early Advanced or Advanced level, who are not yet English proficient, are expected to achieve the English proficient level on the CELDT. ELs at the English proficient level are expected to maintain that level.

Annual Growth Target on CELDT

Most Recent Previous CELDT Overall Performance Level	Annual Growth Target
Beginning	Early Intermediate Overall
Early Intermediate	Intermediate Overall
Intermediate	Early Advanced Overall
Early Advanced or Advanced, but not at the English proficient level on the CELDT. One or more domains is below Intermediate (listening and speaking domains for K–1) (listening, speaking, reading, and writing for grades 2–12).	Achieve the English proficient level. (Overall proficiency level needs to remain at Early Advanced or Advanced level and all domains need to be at the Intermediate level or above. In K–1, just the listening and speaking domains need to be at the Intermediate level.)
Early Advanced or Advanced and at the English proficient level on the CELDT	Maintain English proficient level on the CELDT

The percent of annual CELDT testers within each LEA or consortium that are expected to meet the annual growth target each year are shown in Figure 1. In September 2007, the SBE approved new targets for 2006–07 to 2013–14 that were aligned to the new CELDT performance level cut scores and the new common scale.

Figure 1. Targets for AMAO 1

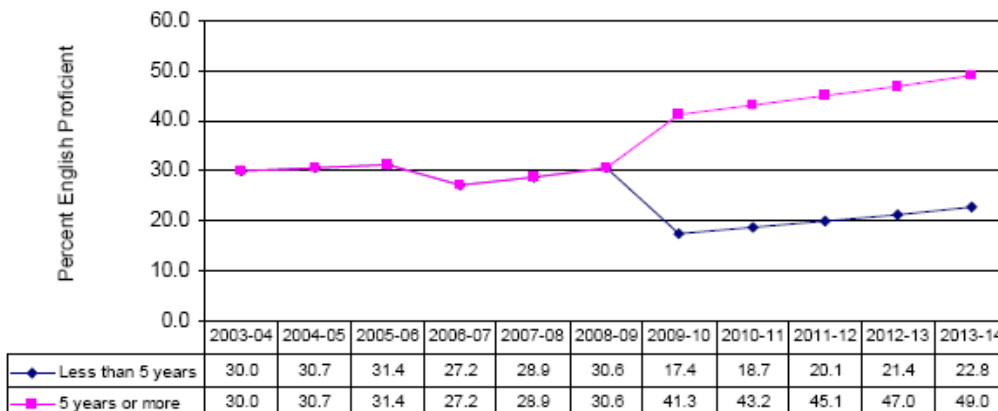


AMAO 2 – Percent of ELs

Attaining the English Proficient Level on the CELDT

The AMAO 2 measures the extent to which ELs are attaining the English proficient level on the CELDT at a given point in time. In California, two cohorts have been established for the AMAO 2: (1) ELs who have been in language instruction educational programs for less than 5 years and (2) ELs who have been in language instruction educational programs for five years or more. In May 2010, the SBE approved new targets for the AMAO 2 for 2009–10 to 2013–14. Title III school districts need to meet the targets for both cohorts in order to meet AMAO 2. Figure 2 presents the new targets for the two cohorts.

Figure 2. Targets for AMAO 2



AMAO 3

Meeting AYP Requirements for the EL Subgroup at the LEA Level

The AMAO 3 holds the Title III LEAs accountable for meeting targets for the EL subgroup that are required of all LEAs, schools, and subgroups under Elementary and Secondary Education Act (ESEA). The academic achievement targets specify the participation rate for ELA and Math and the percent of ELs who must score at the proficient or advanced level in the English-language arts (ELA) CST and Mathematics CST.

2010 AYP Targets for the EL Subgroup

Type of LEA	Targets		
	Participation Rate ELA and Mathematics	Percent Proficient ELA	Percent Proficient Mathematics
Unified districts, county offices of education, and high school districts (Grades 2–8 and 9–12)	95.0%	56.0%	56.4%
Elementary districts, charter elementary schools, and charter middle schools	95.0%	56.8%	58.0%
High school districts and charter high schools (Grades 9–12)	95.0%	55.6%	54.8%
Title III consortia	95.0%	56.0%	56.4%