



Santa Clara County Office of Education

Charles Weis, Ph.D.
County Superintendent of Schools

May 5, 2011

TO: Charles Weis, Ph.D., Superintendent

FROM: Linda Aceves, Chief Academic Officer, Educational Services Branch
Bill Conrad, Ed.D., Director, Assessment & Accountability
Diana Wilmot, Ph.D., Coordinator, Assessment & Accountability
Dan Mason, Research Analyst, Assessment and Accountability
Trish Hernandez, Research Analyst, Assessment and Accountability

SUBJECT: Release of 2010 Base Academic Performance Index (API)

The California Department of Education (CDE) released the 2010 Base API on May 5. API results are reported twice a year: Base API in the Spring and a corresponding Growth API in late summer. Base API is calculated in order to adjust for the different tests taken each year. This adjustment allows us to use the Base API as the “baseline” for reporting comparable growth in performance from one year to the next. Staff has prepared the following analysis for your review.

There are three key features in analyzing the Base API: 1) Meeting the Statewide Target of 800, 2) Decile rank and 3) Similar Schools rank. The Decile rank shows a school’s relative API placement in a statewide distribution of scores. The rankings are broken down into deciles 1 (lowest) to 10 (highest), with a similar percentage of schools in each decile. For the Similar Schools rank, a school’s Base API is compared to 100 other schools in the state with a mix of similar demographic and enrollment characteristics.

Here are some key findings:

Meeting the Statewide Target of 800

- Fifty-six percent of SCC schools (212 of 377) have met or exceeded the statewide target of 800 for the 2010 Base API, compared to 41% statewide (3,769 of 9,153) ([Figure 1](#), [Table 7](#)).
- Elementary schools, by and large, meet the statewide target of 800 for the 2010 Base API at a much greater rate than middle schools and high schools in SCC and across the state ([Figure 1](#)).
- SCC schools and districts are among the top-performing in the state. Three of SCC schools are ranked 1st, 2nd, and 3rd in the state and two of our districts tie for 2nd in the state. ([Tables 1-5](#)).
- Twenty out of thirty-one districts meet the statewide target of 800. ([Table 6](#))

Summary of Decile Ranking for SCC Schools

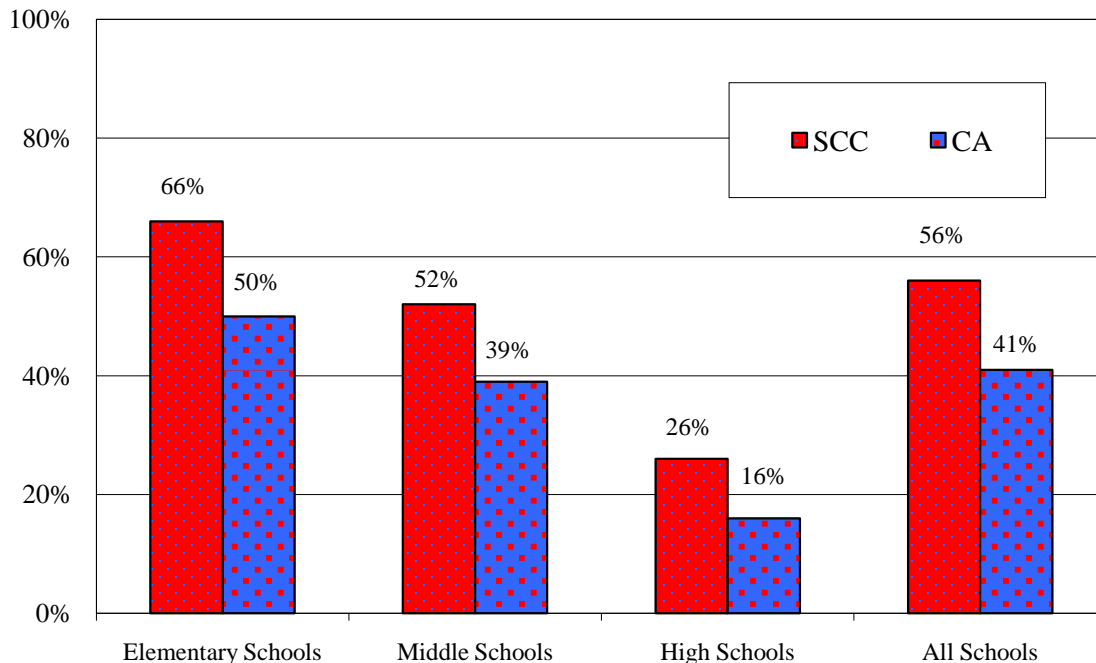
- Twenty-nine percent of SCC schools were ranked in Decile 10 compared to 10% statewide ([Figure 2](#)).
- Sixteen percent of SCC schools (57 of 352) fall in Deciles 1-3. This has been consistent across time ([Figure 3](#)).
- Approximately 45% of SCC schools are in the top three deciles. This is four percentage points higher than 2009, when 41% of SCC schools were in the top three deciles. ([Figure 3-4](#))
- The percentage of SCC schools in the top three deciles exceeds the statewide proportion that are in the top three deciles by 16 percentage points (45% of SCC schools compared to 29% for California). ([Figure 4](#)).
- Sixteen percent of SCC schools are in the lowest three decile rankings. This is an improvement over 2009, when 23% of SCC schools were in the lowest three deciles. Statewide, the proportion of schools in the lowest three deciles is more than twice that of SCC (31% for California compared to 15% for SCC). ([Figure 4](#)).

Summary of Similar Schools Ranking for SCC Schools

- The percentage of SCC schools in the top three similar schools decile rankings increased from 22% in 2009 to 27% in 2010. ([Figure 5](#))
- The percentage of SCC schools in the lowest three similar schools decile rankings remained relatively unchanged, at 33% in 2010 compared to 34% in 2009. ([Figure 5](#))
- SCC had 24 “10-10” schools in 2010 – schools in the top 10% statewide that are also in the top 10% compared to similar schools. This is six more than the number that attained the distinction last year. ([Table 8](#))

Figure 1

**Percent of Schools Meeting Statewide Target of 800,
 Base API by School Type
 SCC vs. CA**



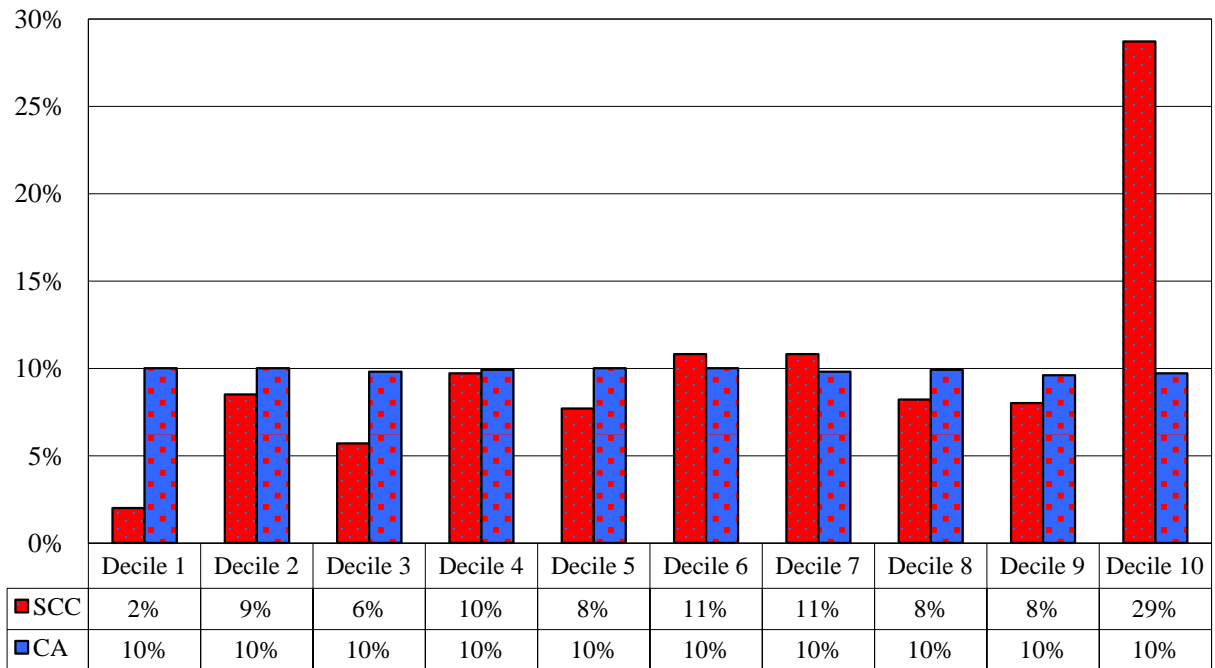
**Number of Schools At or Above 2010 Base API Performance Target of 800, by School Type
 SCC vs. CA**

	SCC		CA	
	Schools with 800+ 2010 Base API	Total Schools	Schools with 800+ 2010 Base API	Total Schools
Elementary Schools	161	244	2,909	5,772
Middle Schools	33	64	531	1,361
High Schools	18	69	329	2,020
All Schools	212	377	3,769	9,153

[Back to Page 1](#)

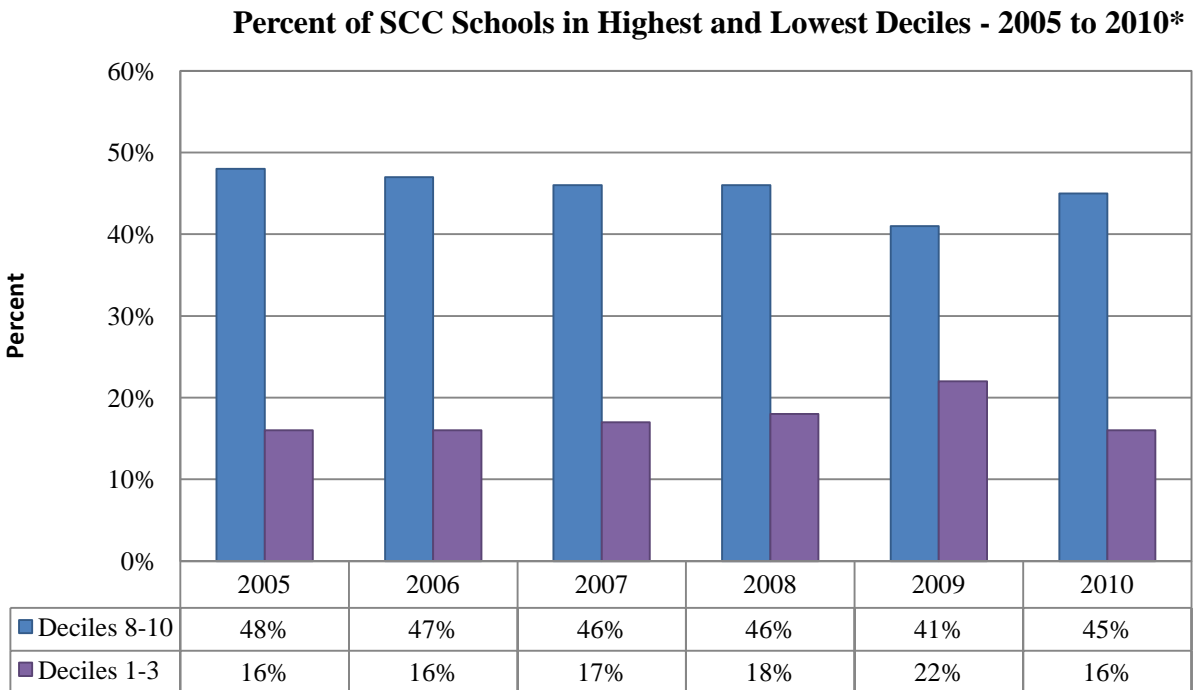
Figure 2

**Percent of Schools in Each 2010 Base API Decile Ranking Group
 SCC vs. CA**



[Back to Page 2](#)

Figure 3

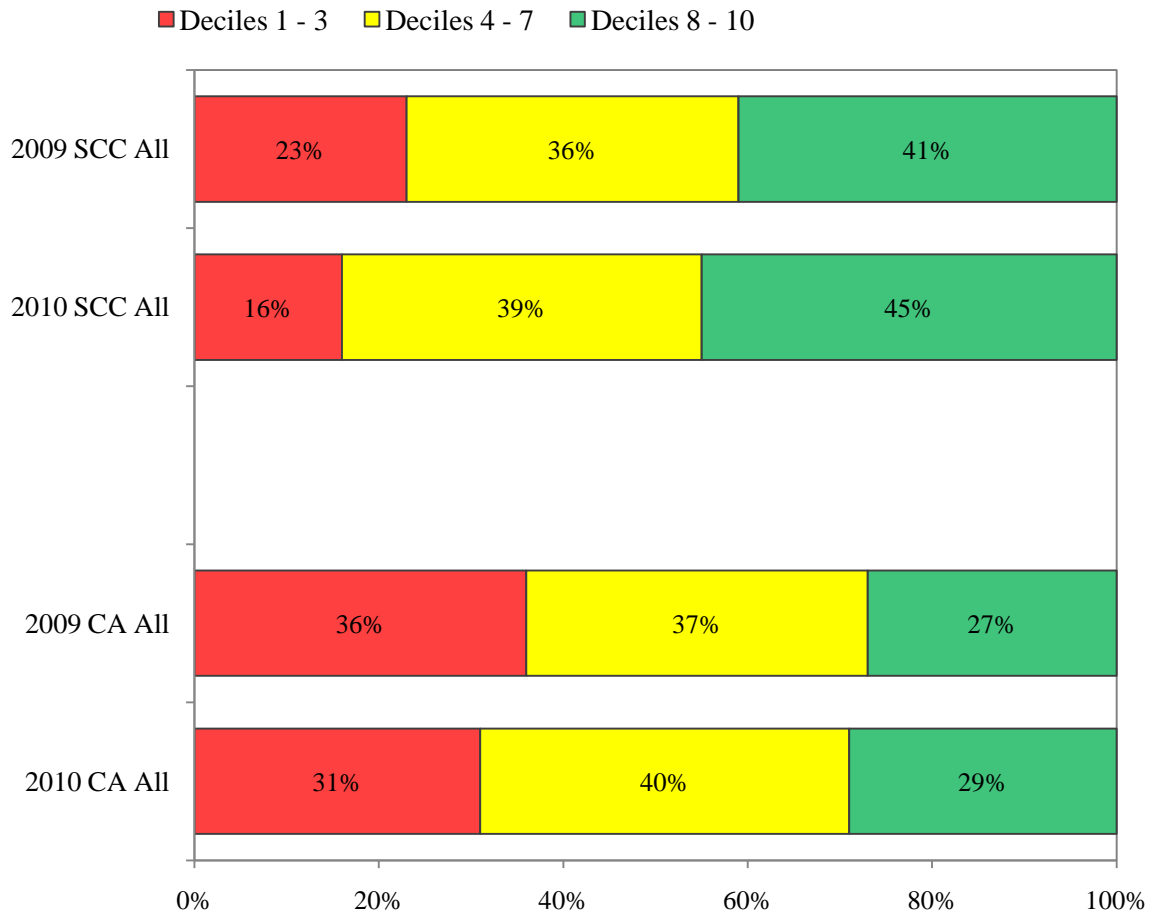


Number of SCC Schools With Statewide Decile Ranks of 1, 2, or 3 2002 to 2010 Base API						
	2005	2006	2007	2008	2009	2010
Schools With Decile Ranks of 1, 2, or 3	56	55	58	62	82*	57
Schools With Decile Ranks of 8, 9 or 10	164	161	158	160	154	158
Total Schools	345	345	346	349	372*	352

*The 2009 Base API included, for the first time and the only time, statewide decile ranks for all schools with Base API scores. In all other years, some schools with Base API scores were not given statewide decile ranks.

Figure 4

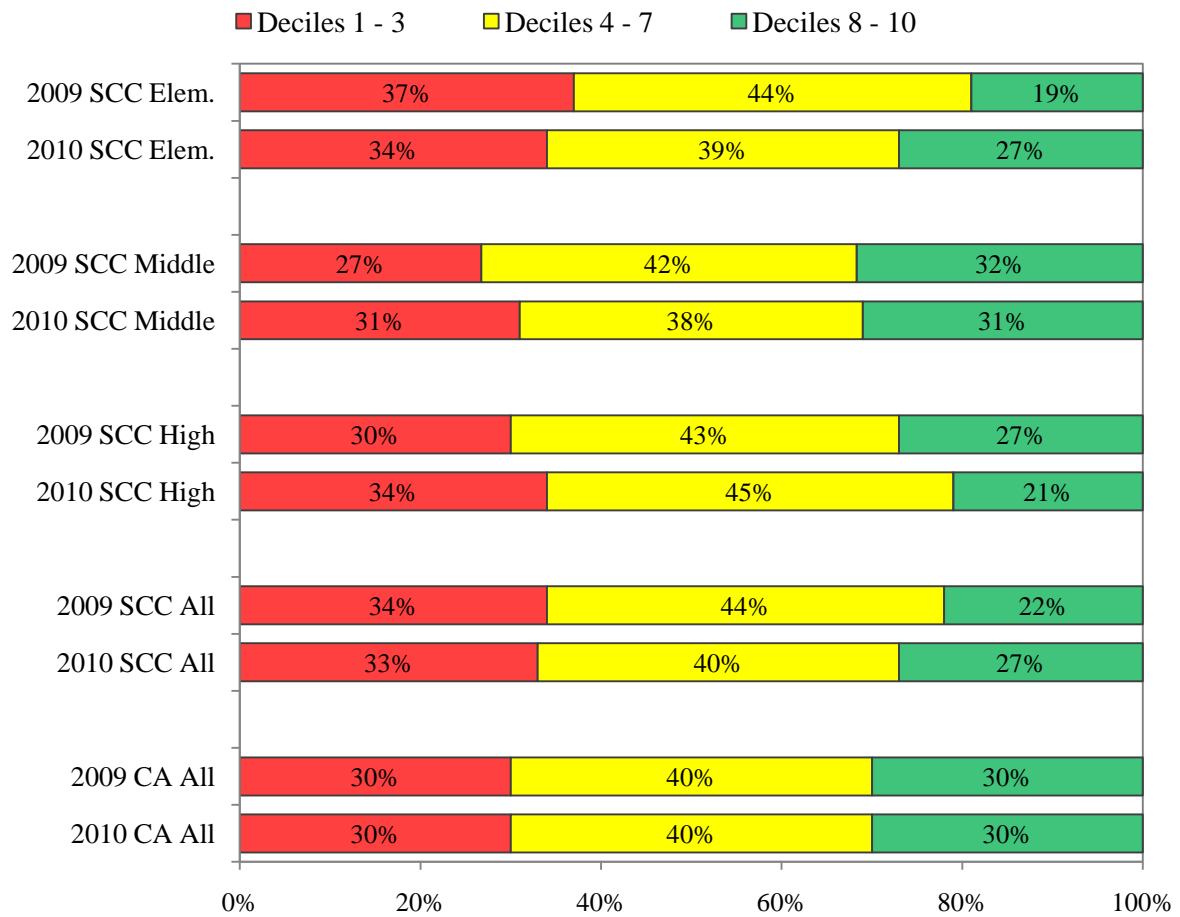
Decile Rankings for SCC Schools, 2009 vs. 2010



[Back to Page 2](#)

Figure 5

Similar Schools Ranking for SCC Schools, 2009 vs. 2010



[Back to Page 2](#)

Table 1: SCC Schools With the 15 Highest 2010 Base API Scores

Rank*	School	District	2010 Base API
1	Millikin Elementary	Santa Clara Unified	999
2	Murdock-Portal Elementary	Cupertino Union	998
3	William Faria Elementary	Cupertino Union	997
8	Garden Gate Elementary	Cupertino Union	990
T 12	Bullis Charter	Santa Clara County Office of Ed.	988
T 17	Nelson S. Dilworth Elementary	Cupertino Union	986
T 17	William Regnart Elementary	Cupertino Union	986
T 17	John F. Kennedy Middle	Cupertino Union	986
T 21	Herbert Hoover Elementary	Palo Alto Unified	984
T 24	Sam H. Lawson Middle	Cupertino Union	983
T 24	Joaquin Miller Middle	Cupertino Union	983
T 27	Tom Matsumoto Elementary	Evergreen Elementary	981
T 31	L. P. Collins Elementary	Cupertino Union	980
T 31	Covington Elementary	Los Altos Elementary	980
T 31	Oak Avenue Elementary	Los Altos Elementary	980

* T indicates tied rank(s).

Table 2. Three Top Performing SCC Districts

SCC Rank	District	API	CA Rank*
1	Los Altos Elementary	965	T 3
2	Saratoga Union Elementary	965	T 3
3	Lakeside Joint	963	T 5

* T indicates tied rank(s).

Table 3. Three Top Performing SCC Elementary Schools

SCC Rank	Elementary School	District	API	CA Elem. Rank
1	Millikin Elementary	Santa Clara Unified	999	1
2	Murdock-Portal Elementary	Cupertino Union	998	2
3	William Faria Elementary	Cupertino Union	997	3

Table 4. Three Top Performing SCC Middle Schools

SCC Rank	Middle School	District	API	CA Middle Rank
1	John F. Kennedy Middle	Cupertino Union	986	3
2	Joaquin Miller Middle	Cupertino Union	983	T 6
2	Sam H. Lawson Middle	Cupertino Union	983	T 6

Table 5. Three Top Performing SCC High Schools

SCC Rank	High School	District	API	CA High Rank
1	Monta Vista High	Fremont Union High	943	8
2	Lynbrook High	Fremont Union High	938	12
3	Saratoga High	Los Gatos-Saratoga Joint Union	931	14

Table 6. SCC Districts with 2010 Base API Scores of 800 or Higher

District	2010 Base API
Los Altos Elementary	965
Saratoga Union Elementary	965
Lakeside Joint	963
Cupertino Union	951
Loma Prieta Joint Union Elementary	935
Palo Alto Unified	925
Los Gatos Union Elementary	921
Union Elementary	905
Los Gatos-Saratoga Joint Union	897
Cambrian	878
Fremont Union High	875
Evergreen Elementary	874
Moreland Elementary	870
Mountain View-Los Altos Union	854
Milpitas Unified	831
Campbell Union	830
Mountain View Whisman	826
Berryessa Union Elementary	823
Oak Grove Elementary	806
Santa Clara Unified	800

Table 7. All Santa Clara County Schools with 2010 Base API Score Over 800

School	District	2010 Base API
Millikin Elementary	Santa Clara Unified	999
Murdock-Portal Elementary	Cupertino Union	998
William Faria Elementary	Cupertino Union	997
Garden Gate Elementary	Cupertino Union	990
Bullis Charter	Santa Clara County Office of Ed.	988
John F. Kennedy Middle	Cupertino Union	986
Nelson S. Dilworth Elementary	Cupertino Union	986
William Regnart Elementary	Cupertino Union	986
Herbert Hoover Elementary	Palo Alto Unified	984
Joaquin Miller Middle	Cupertino Union	983
Sam H. Lawson Middle	Cupertino Union	983
Tom Matsumoto Elementary	Evergreen Elementary	981
L. P. Collins Elementary	Cupertino Union	980
Covington Elementary	Los Altos Elementary	980
Oak Avenue Elementary	Los Altos Elementary	980
Duveneck Elementary	Palo Alto Unified	977
Argonaut Elementary	Saratoga Union Elementary	974
Abraham Lincoln Elementary	Cupertino Union	973
Silver Oak Elementary	Evergreen Elementary	973
Blue Hills Elementary	Cupertino Union	972
Williams Elementary	San Jose Unified	972
Redwood Middle	Saratoga Union Elementary	972
Ardis G. Egan Junior High	Los Altos Elementary	968
Simonds Elementary	San Jose Unified	968
Georgina P. Blach Junior High	Los Altos Elementary	964
Santa Rita Elementary	Los Altos Elementary	964
Montclair Elementary	Cupertino Union	963
Stevens Creek Elementary	Cupertino Union	963
Lakeside Elementary	Lakeside Joint	963
Loyola Elementary	Los Altos Elementary	963
Almond Elementary	Los Altos Elementary	962
Marshall Lane Elementary	Campbell Union	959
R. I. Meyerholz Elementary	Cupertino Union	958
Graystone Elementary	San Jose Unified	958
Saratoga Elementary	Saratoga Union Elementary	958

School	District	2010 Base API
Gardner Bullis Elementary	Los Altos Elementary	957
Louis E. Stocklmeir Elementary	Cupertino Union	956
James Franklin Smith Elementary	Evergreen Elementary	956
Blossom Hill Elementary	Los Gatos Union Elementary	956
Palo Verde Elementary	Palo Alto Unified	955
Springer Elementary	Los Altos Elementary	954
C. B. Eaton Elementary	Cupertino Union	953
Lucille M. Nixon Elementary	Palo Alto Unified	952
El Carmelo Elementary	Palo Alto Unified	948
Loma Prieta Elementary	Loma Prieta Joint Union Elem.	947
Addison Elementary	Palo Alto Unified	945
Carolyn A. Clark Elementary	Evergreen Elementary	943
Monta Vista High	Fremont Union High	943
Foothill Elementary	Saratoga Union Elementary	943
West Valley Elementary	Cupertino Union	942
Cherry Chase Elementary	Sunnyvale	942
Country Lane Elementary	Moreland Elementary	941
Juana Briones Elementary	Palo Alto Unified	941
Noddin Elementary	Union Elementary	941
Terman Middle	Palo Alto Unified	940
Lynbrook High	Fremont Union High	938
David Starr Jordan Middle	Palo Alto Unified	938
Alta Vista Elementary	Union Elementary	938
John Muir Elementary	Cupertino Union	936
Fairmeadow Elementary	Palo Alto Unified	935
Walter Hays Elementary	Palo Alto Unified	934
Village	Campbell Union	933
Louise Van Meter Elementary	Los Gatos Union Elementary	931
Saratoga High	Los Gatos-Saratoga Joint Union	931
Jane Lathrop Stanford Middle	Palo Alto Unified	931
Carlton Elementary	Union Elementary	930
Guadalupe Elementary	Union Elementary	930
Frank L. Huff Elementary	Mountain View Whisman	929
Cupertino Middle	Cupertino Union	928
Cumberland Elementary	Sunnyvale	928
Evergreen Elementary	Evergreen Elementary	927
C. T. English Middle	Loma Prieta Joint Union Elem.	925

School	District	2010 Base API
Rocketship Mateo Sheedy Elementary	Santa Clara County Office of Ed.	925
Bagby Elementary	Cambrian	924
Chaboya Middle	Evergreen Elementary	924
Laurelwood Elementary	Santa Clara Unified	921
Discovery Charter	Santa Clara County Office of Ed.	920
Ruskin Elementary	Berryessa Union Elementary	919
Forest Hill Elementary	Campbell Union	918
Henry M. Gunn High	Palo Alto Unified	918
KIPP Heartwood Academy	Alum Rock Union Elementary	916
Rolling Hills Middle	Campbell Union	916
Dwight D. Eisenhower Elementary	Cupertino Union	916
Ohlone Elementary	Palo Alto Unified	916
Los Alamitos Elementary	San Jose Unified	916
Daves Avenue Elementary	Los Gatos Union Elementary	913
Booksin Elementary	San Jose Unified	913
Fammatre Charter	Cambrian	910
Raymond J. Fisher Middle	Los Gatos Union Elementary	909
Bret Harte Middle	San Jose Unified	909
D. J. Sedgwick Elementary	Cupertino Union	908
Gussie M. Baker Elementary	Moreland Elementary	905
Escondido Elementary	Palo Alto Unified	905
Benjamin Bubb Elementary	Mountain View Whisman	904
Norwood Creek Elementary	Evergreen Elementary	900
Dartmouth Middle	Union Elementary	900
Stevenson	Mountain View Whisman	899
Sartorette Charter	Cambrian	898
Palo Alto High	Palo Alto Unified	897
Bracher Elementary	Santa Clara Unified	894
Cupertino High	Fremont Union High	893
KIPP San Jose Collegiate	East Side Union High	892
Dr. T. J. Owens Gilroy Early College Aca	Gilroy Unified	892
Taylor (Bertha) Elementary	Oak Grove Elementary	892
Union Middle	Union Elementary	892
John Sinnott Elementary	Milpitas Unified	890
Sutter Elementary	Santa Clara Unified	890
Leland High	San Jose Unified	889
Charter School of Morgan Hill	Morgan Hill Unified	887
Rocketship Si Se Puede Academy	Santa Clara County Office of Ed.	886
Curtner Elementary	Milpitas Unified	885

School	District	2010 Base API
Paradise Valley/Machado Elementary	Morgan Hill Unified	881
Oster Elementary	Union Elementary	881
Washington Elementary	Santa Clara Unified	880
Marshall Pomeroy Elementary	Milpitas Unified	879
George C. Payne Elementary	Moreland Elementary	876
Capri Elementary	Campbell Union	872
Thomas Russell Junior High	Milpitas Unified	872
Los Gatos High	Los Gatos-Saratoga Joint Union	871
Easterbrook Discovery	Moreland Elementary	871
Nordstrom Elementary	Morgan Hill Unified	871
Northwood Elementary	Berryessa Union Elementary	870
Hacienda Science/Environmental Magnet	San Jose Unified	870
Noble Elementary	Berryessa Union Elementary	868
Pearl Zanker Elementary	Milpitas Unified	866
Santa Teresa Elementary	Oak Grove Elementary	866
Price Charter Middle	Cambrian	864
Millbrook Elementary	Evergreen Elementary	864
Cadwallader Elementary	Evergreen Elementary	861
Mountain View High	Mountain View-Los Altos Union	861
Barron Park Elementary	Palo Alto Unified	861
Millard McCollam Elementary	Alum Rock Union Elementary	859
University Preparatory Academy Charter	Santa Clara County Office of Ed.	858
Homestead High	Fremont Union High	857
Los Altos High	Mountain View-Los Altos Union	857
Ledesma (Rita) Elementary	Oak Grove Elementary	857
Rancho Milpitas Junior High	Milpitas Unified	856
Warren E. Hyde Middle	Cupertino Union	855
Laurelwood Elementary	Evergreen Elementary	855
Ponderosa Elementary	Santa Clara Unified	855
William Burnett Elementary	Milpitas Unified	853
Glider Elementary	Oak Grove Elementary	853
Marian A. Peterson Middle	Santa Clara Unified	853
Quimby Oak Middle	Evergreen Elementary	852
Luigi Aprea Elementary	Gilroy Unified	852
Anthony Spangler Elementary	Milpitas Unified	852
Willow Glen Elementary	San Jose Unified	852
Manuel De Vargas Elementary	Cupertino Union	850

School	District	2010 Base API
Farnham Charter	Cambrian	847
Majestic Way Elementary	Berryessa Union Elementary	846
Sakamoto Elementary	Oak Grove Elementary	846
Hammer Montessori at Galarza Elementary	San Jose Unified	845
Schallenberger Elementary	San Jose Unified	845
Moreland Middle	Moreland Elementary	843
Reed Elementary	San Jose Unified	842
Braly Elementary	Santa Clara Unified	842
Don Callejon	Santa Clara Unified	842
Evergreen Valley High	East Side Union High	839
Holly Oak Elementary	Evergreen Elementary	839
Ramblewood Elementary	Franklin-McKinley Elementary	839
Eliot Elementary	Gilroy Unified	836
Los Paseos Elementary	Morgan Hill Unified	836
Edith Landels Elementary	Mountain View Whisman	836
James McEntee Academy	Alum Rock Union Elementary	835
Lietz Elementary	Union Elementary	835
Chester W. Nimitz Elementary	Cupertino Union	834
Cherrywood Elementary	Berryessa Union Elementary	833
Shirakawa (George, Sr.) Elementary	Franklin-McKinley Elementary	833
Parkview Elementary	Oak Grove Elementary	833
Sierramont Middle	Berryessa Union Elementary	832
Brooktree Elementary	Berryessa Union Elementary	830
Sherman Oaks Elementary	Campbell Union	830
Bowers Elementary	Santa Clara Unified	830
Laneview Elementary	Berryessa Union Elementary	829
Terrell Elementary	San Jose Unified	827
Summerdale Elementary	Berryessa Union Elementary	826
Las Animas Elementary	Gilroy Unified	826
Rachel Carson Elementary	San Jose Unified	826
Renaissance Academy	Alum Rock Union Elementary	825
Pioneer High	San Jose Unified	825
Cedar Grove Elementary	Evergreen Elementary	822
Alexander Rose Elementary	Milpitas Unified	821
Frost (Earl) Elementary	Oak Grove Elementary	821
Oak Ridge Elementary	Oak Grove Elementary	821

School	District	2010 Base API
Monta Loma Elementary	Mountain View Whisman	820
Lowell Elementary	San Jose Unified	820
Vinci Park Elementary	Berryessa Union Elementary	818
River Glen	San Jose Unified	817
Leigh High	Campbell Union High	816
O. B. Whaley Elementary	Evergreen Elementary	815
Solorsano Middle	Gilroy Unified	814
Isaac Newton Graham Middle	Mountain View Whisman	814
Hayes Elementary	Oak Grove Elementary	814
Franklin Elementary	Franklin-McKinley Elementary	813
Kathryn Hughes Elementary	Santa Clara Unified	813
Valle Vista Elementary	Mt. Pleasant Elementary	811
George Mayne Elementary	Santa Clara Unified	811
Ellis Elementary	Sunnyvale	811
Castlemont Elementary	Campbell Union	810
Leroy Anderson Elementary	Moreland Elementary	810
Robert F. Kennedy Elementary	Franklin-McKinley Elementary	809
Windmill Springs Elementary	Franklin-McKinley Elementary	809
Sylvia Cassell Elementary	Alum Rock Union Elementary	808
Piedmont Hills High	East Side Union High	808
G. W. Hellyer Elementary	Franklin-McKinley Elementary	808
Stonegate Elementary	Franklin-McKinley Elementary	808
Dove Hill Elementary	Evergreen Elementary	806
Sunnyvale Middle	Sunnyvale	805
Bernal Intermediate	Oak Grove Elementary	804
Castillero Middle	San Jose Unified	804
Lakewood Elementary	Sunnyvale	802
Herman (Leonard) Intermediate	Oak Grove Elementary	800

[Back to Page 1](#)

Table 8. SCC “10-10” Schools, 2010 (Ranked in 10th Decile in Both the Statewide and Similar Schools Ranks)

School	District	2010 Base API
Millikin Elementary	Santa Clara Unified	999
Murdock-Portal Elementary	Cupertino Union	998
William Faria Elementary	Cupertino Union	997
Garden Gate Elementary	Cupertino Union	990
Bullis Charter	Santa Clara County Office of Ed.	988
John F. Kennedy Middle	Cupertino Union	986
Nelson S. Dilworth Elementary	Cupertino Union	986
William Regnart Elementary	Cupertino Union	986
Joaquin Miller Middle	Cupertino Union	983
Sam H. Lawson Middle	Cupertino Union	983
Covington Elementary	Los Altos Elementary	980
Silver Oak Elementary	Evergreen Elementary	973
Redwood Middle	Saratoga Union Elementary	972
Ardis G. Egan Junior High	Los Altos Elementary	968
Monta Vista High	Fremont Union High	943
Lynbrook High	Fremont Union High	938
Saratoga High	Los Gatos-Saratoga Joint Union	931
C. T. English Middle	Loma Prieta Joint Union Elementary	925
Rocketship Mateo Sheedy Elementary	Santa Clara County Office of E	925
Bagby Elementary	Cambrian	924
KIPP Heartwood Academy	Alum Rock Union Elementary	916
Dartmouth Middle	Union Elementary	900
KIPP San Jose Collegiate	East Side Union High	892
Dr. T. J. Owens Gilroy Early College Acad.	Gilroy Unified	892

[Back to Page 2](#)

Table 9. SCC Charter Schools 2010 Base API Scores

School	District	2010 Base API
Bullis Charter	Santa Clara County Office of Ed.	988
Marshall Lane Elementary	Campbell Union Elementary	959
Village	Campbell Union Elementary	933
Rocketship Mateo Sheedy Elementary	Santa Clara County Office of Ed.	925
Discovery Charter	Santa Clara County Office of Ed.	920
Forest Hill Elementary	Campbell Union Elementary	918
KIPP Heartwood Academy	Alum Rock Union Elementary	916
Rolling Hills Middle	Campbell Union Elementary	916
Fammatre Charter	Cambrian	910
Sartorette Charter	Cambrian	898
KIPP San Jose Collegiate	East Side Union High	892
Charter School of Morgan Hill	Morgan Hill Unified	887
Rocketship Si Se Puede Academy	Santa Clara County Office of Ed.	886
Capri Elementary	Campbell Union Elementary	872
Price Charter Middle	Cambrian	864
University Preparatory Academy Charter	Santa Clara County Office of Ed.	858
Farnham Charter	Cambrian	847
Sherman Oaks Elementary	Campbell Union Elementary	830
Castlemont Elementary	Campbell Union Elementary	810
Monroe Middle	Campbell Union Elementary	776
Lynhaven Elementary	Campbell Union Elementary	773
Blackford Elementary	Campbell Union Elementary	767
Rosemary Elementary	Campbell Union Elementary	760
ACE Charter	Santa Clara County Office of Ed.	744
Voices College-Bound Language Acad.	Franklin-McKinley Elementary	741
Walter L. Bachrodt Elementary	San Jose Unified	729
Bridges Academy (Fair Middle School)	Franklin-McKinley Elementary	724
Escuela Popular/Center for Training and	East Side Union High	707
South Bay Preparatory	Santa Clara County Office of Ed.	704
Latino College Preparatory Academy	East Side Union High	671
Downtown College Preparatory	San Jose Unified	667
Downtown College Prep Alviso	Santa Clara Unified	659
Leadership Public Schools - San Jose	Santa Clara County Office of Ed.	625
Escuela Popular Accelerated Family Learn	East Side Union High	592

Table 10: Schools That Did Not Receive a 2010 Base API Score

School	District	Flag
Christa McAuliffe Elementary	Cupertino Union	1
Lexington Elementary	Los Gatos Union Elementary	2
Berryessa Union Elementary	Berryessa Union Elementary	4
Community Day	Campbell Union	4
Camden Community Day	Campbell Union High	4
Community Day	Fremont Union High	4
Adult Education	Mountain View-Los Altos Union	4
The Academy	Oak Grove Elementary	4
Packard Children's Hospital/Stanford	Palo Alto Unified	4
Community Career Academy (Continuation)	San Jose Unified	4
Gunderson Plus (Continuation)	San Jose Unified	4
Lincoln Plus High	San Jose Unified	4
Middle College High	San Jose Unified	4
Alternative Placement Academy	Santa Clara County Office of Ed.	4
San Jose Conservation Corps Charter	East Side Union High	6

Flag	Flag Definition
1	<p>The school's proportion of students excused at parent request compared to its Standardized Testing and Reporting (STAR) program enrollment on the first day of testing is equal to or greater than 10 percent.</p> <p>When a school's proportion of parental waivers is equal to or greater than 10 but less than 20 percent, the California Department of Education conducts standard statistical tests to check whether the pupils tested at the school were representative of the entire school's population.</p> <p>This school failed the statistical test or its proportion of parental waivers in 2010 was 20 percent or greater, therefore, the school does not have a valid 2010 API Base.</p>
2	<p>This school (or the district on behalf of the school) has certified to the California Department of Education that an irregularity in testing procedure occurred during the Spring 2010 STAR testing affecting 5 percent or more of pupils tested. Therefore, a 2010 API Base is not reported for this school.</p>
4	<p>In 2010, this school had fewer than 11 valid STAR test scores.</p>
6	<p>School has California High School Exit Exam (CAHSEE) results but no valid STAR results.</p>

Glossary

2010 Base Academic Performance Index (API)

The 2010 Base API summarizes a school's, an LEA's, or the state's performance on the spring 2010 Standardized Testing and Reporting (STAR) Program and 2010 California High School Exit Examination (CAHSEE). It serves as the baseline score, or starting point, of performance. The API is on a scale of 200 to 1000. It is calculated from the performance of individual students on the following tests:

- California English-Language Arts and Mathematics Standards Tests (CSTs in ELA and mathematics) - grades two through eleven
- California Science Standards Test (CST in science) - grades five, eight, and nine through eleven
- California Life Science Standards Test (CST in life science) - grade ten
- California History-Social Science Standards Test (CST in history-social science) - grades eight through eleven
- California Modified Assessment (CMA) in ELA grades three through nine, mathematics grades three through seven, Algebra I, and science, grades five, eight, and ten
- California Alternate Performance Assessment (CAPA) in ELA and mathematics - grades two through eleven, and science, grades five, eight, and ten
- California High School Exit Examination (CAHSEE in ELA and mathematics) - grade ten (and grades eleven and twelve if students retook either part of the CAHSEE and passed that part)

In addition, APIs also are calculated for numerically significant student subgroups at a school or an LEA.

2010 Statewide Rank

This item is for school reports only. On the API Base reports, schools are ranked in ten categories of equal size, called deciles, from one (lowest) to ten (highest). A school's statewide rank compares that school to other schools of the same type in the entire state. The school types are elementary, middle, and high. Each decile contains 10 percent of all schools of that type. A school's statewide rank is the decile where that school's API Base falls compared with the Base APIs of the other schools statewide of the same school type. Special education schools and schools in the Alternative Schools Accountability Model (ASAM) do not receive statewide ranks.

2010 Similar Schools Rank

This item is for school reports only. In addition to statewide ranks, schools are ranked compared to 100 other schools with similar demographic characteristics. For the similar schools rank, schools are ranked into deciles according to school type: elementary, middle, and high. To determine the similar schools rank for a school, a comparison group of 100 similar schools of the same type is formed for that school, based on similar demographic characteristics. The APIs for this group of 100 schools are ranked into ten categories of equal size, called deciles, from one (lowest) to ten (highest). Each decile contains 10 percent of all of the 100 similar schools in the comparison group. The school's similar schools rank is the decile where that school's Base API falls compared with the Base APIs of the 100 other similar schools in the comparison

group. Special education schools, schools in the ASAM, and small schools with between 11 to 99 valid STAR Program scores do not receive similar schools ranks.

The Public Schools Accountability Act (PSAA) specifies the demographic characteristics to include in similar schools rank calculations:

Pupil mobility

Pupil ethnicity (eight variables)

Pupil socioeconomic status (two variables)

Percentage of teachers who are fully credentialed (not available for the 2010 similar schools ranks)

Percentage of teachers who hold emergency credentials (not available for the 2010 similar schools ranks)

Percentage of pupils who are English learners (ELs)

Average class size per grade level (not available for the 2010 similar schools ranks)

Whether the school operates a multitrack year-round educational program

Percentage of grade span enrollments (grades two, three to five, six, seven to eight, and nine to eleven)

Percentage of students in gifted and talented education program

Percentage of students with disabilities (SWDs)

Percentage of reclassified fluent-English-proficient (RFEP) students

Percentage of migrant education students